

# Human 2B4/CD244/SLAMF4 Protein

Cat. No. 2B4-HM101

## Description

|                         |  |
|-------------------------|--|
| <b>Source</b>           | Recombinant Human 2B4/CD244/SLAMF4 Protein is expressed from HEK293 with His tag at the C-Terminus. It contains Cys22-Arg221.      |
| <b>Accession</b>        | Q9BZW8-2   |
| <b>Molecular Weight</b> | The protein has a predicted MW of 23.1 kDa. Due to glycosylation, the protein migrates to 45-70 kDa based on Bis-Tris PAGE result. |
| <b>Endotoxin</b>        | Less than 1EU per µg by the LAL method.  |
| <b>Purity</b>           | > 95% as determined by Bis-Tris PAGE<br>> 95% as determined by HPLC  |

## Formulation and Storage

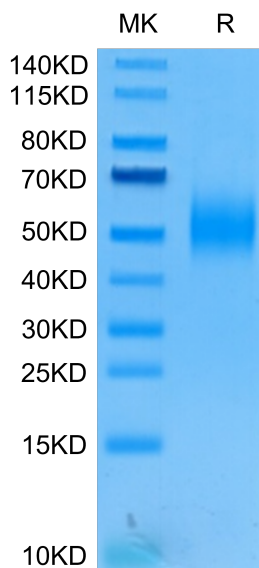
|                       |   |
|-----------------------|---|
| <b>Formulation</b>    | Lyophilized from 0.22µm filtered solution in PBS (pH 7.4). Normally 8% trehalose is added as protectant before lyophilization.  |
| <b>Reconstitution</b> | Centrifuge the tube before opening. Reconstituting to a concentration more than 100 µg/ml is recommended. Dissolve the lyophilized protein in distilled water.  |
| <b>Storage</b>        | -20 to -80°C for 24 months as supplied from date of receipt. -80°C for 3 months after reconstitution. Recommend to aliquot the protein into smaller quantities for optimal storage. Please minimize freeze-thaw cycles. |

## Background

2B4 (CD244) is expressed by memory-phenotype CD8 T cells and all natural killer (NK) cells. The ligand for 2B4, CD48, is expressed on hematopoietic cells. 2B4 is conserved in humans and mice, and a number of reports have linked 2B4 with activation of lymphocytes. Engagement of 2B4 on NK cell surfaces with specific antibodies or CD48 can trigger cell mediated cytotoxicity, interferon  $\gamma$  secretion, phosphoinositol turnover and NK cell invasiveness.

## Assay Data

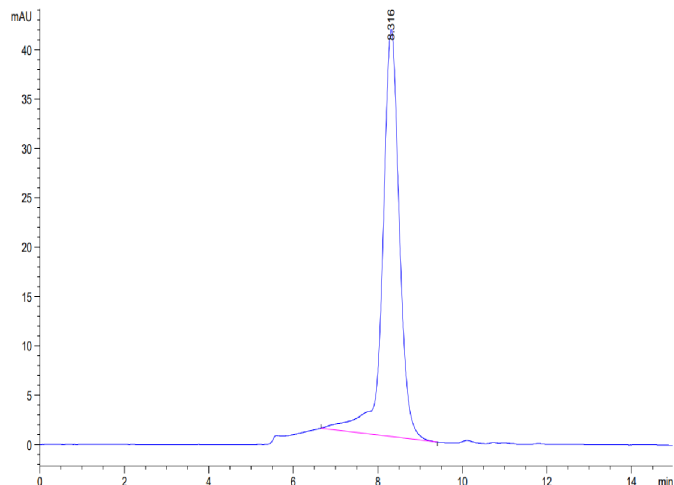
### Bis-Tris PAGE



Human 2B4 on Bis-Tris PAGE under reduced condition. The purity is greater than 95%.

### SEC-HPLC

Assay Data

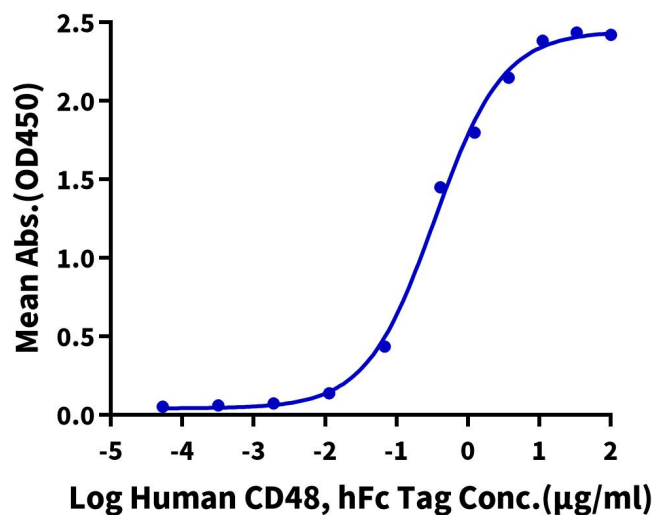


The purity of Human 2B4 is greater than 95% as determined by SEC-HPLC.

ELISA Data

**Human 2B4, His Tag ELISA**

0.1µg Human 2B4, His Tag Per Well



Immobilized Human 2B4, His Tag at 1µg/ml (100µl/well) on the plate. Dose response curve for Human CD48, hFc Tag with the EC50 of 0.34µg/ml determined by ELISA.